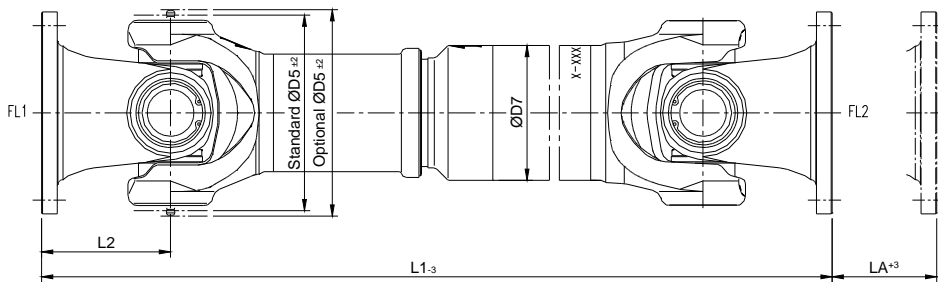


Eckdaten basic data

Maximaldrehmoment Maximum torque	(M _{dmax}) (M _{tmax})	3000 Nm	Dauerwechsel Drehmoment Alternating torque	1700 Nm
Grenzdrehmoment Limit torque		4350 Nm	Drehzahl Revolution	1 – 5000 U/min (rpm)
Betriebstemperatur Operational temperature		Standard: -30°C - +120°C Optional: auf Anfrage	Rohr Verdrehsteifigkeit Tube torsional stiffness	C _t Standard: 57 kNm/rad per m Optional: 98 kNm/rad per m
Rotationsdurchmesser Diameter of rotation		Standard: Ø 116 mm (D5) Optional: Ø 124 mm (D5)	Rohr Massenträgheit Tube inertia moment	J _t Standard: 0.00539 kgm² per m Optional: 0.00955 kgm² per m
Rohrdurchmesser Tube diameter		Standard: Ø 70x3 mm (D7) Optional: Ø 80x3 mm * (D7)	Rohrgewicht Tube weight	m _t Standard: 5.0 kg per m Optional: 5.7 kg per m

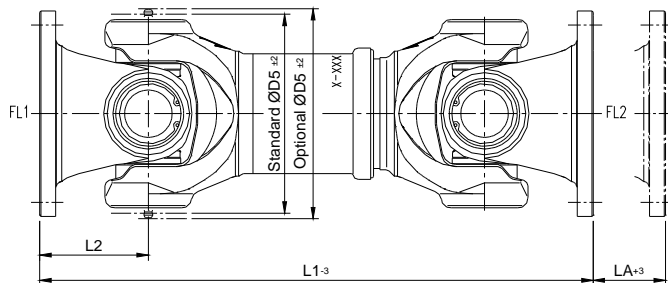
*= Alle anderen Rohrdurchmesser auf Anfrage

*=all other tube diameter on request

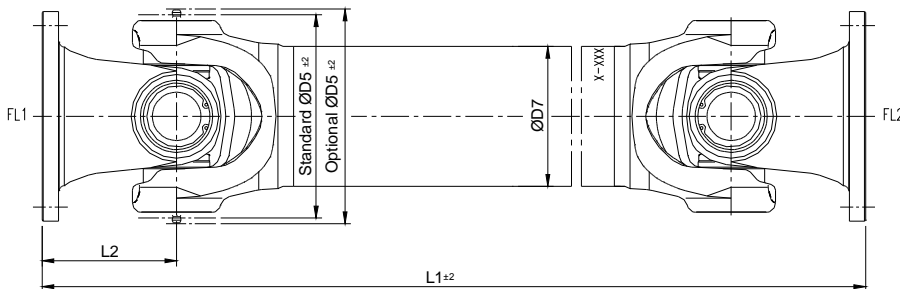


GW	500-105	
L1	470–6300 mm	
LA	70 mm *	
Gewicht Weight	m _b	15.5 kg
Massenträgheit Inertia moment	J _b	0.0243 kgm ²
Verdrehsteifigkeit Torsional stiffness	C _b	54 kNm/rad

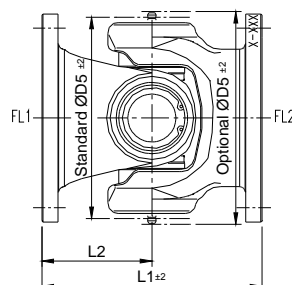
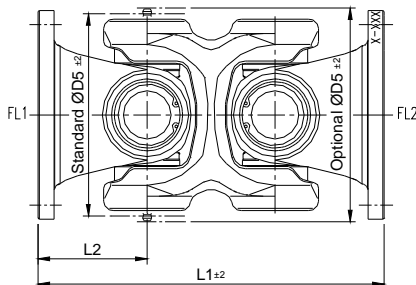
*=ängeren LA auf Anfrage
*=longer LA on request



GW	513-105	
L1	330–465 mm	
LA	20-70 mm	
Gewicht Weight	m _b	12.1 kg
Massenträgheit Inertia moment	J _b	0.0193 kgm ²
Verdrehsteifigkeit Torsional stiffness	C _b	55 kNm/rad



GW	505-105	
L1	310–6200 mm	
Gewicht Weight	m _b	9.5 kg
Massenträgheit Inertia moment	J _b	0.0162 kgm ²
Verdrehsteifigkeit Torsional stiffness	C _b	91 kNm/rad

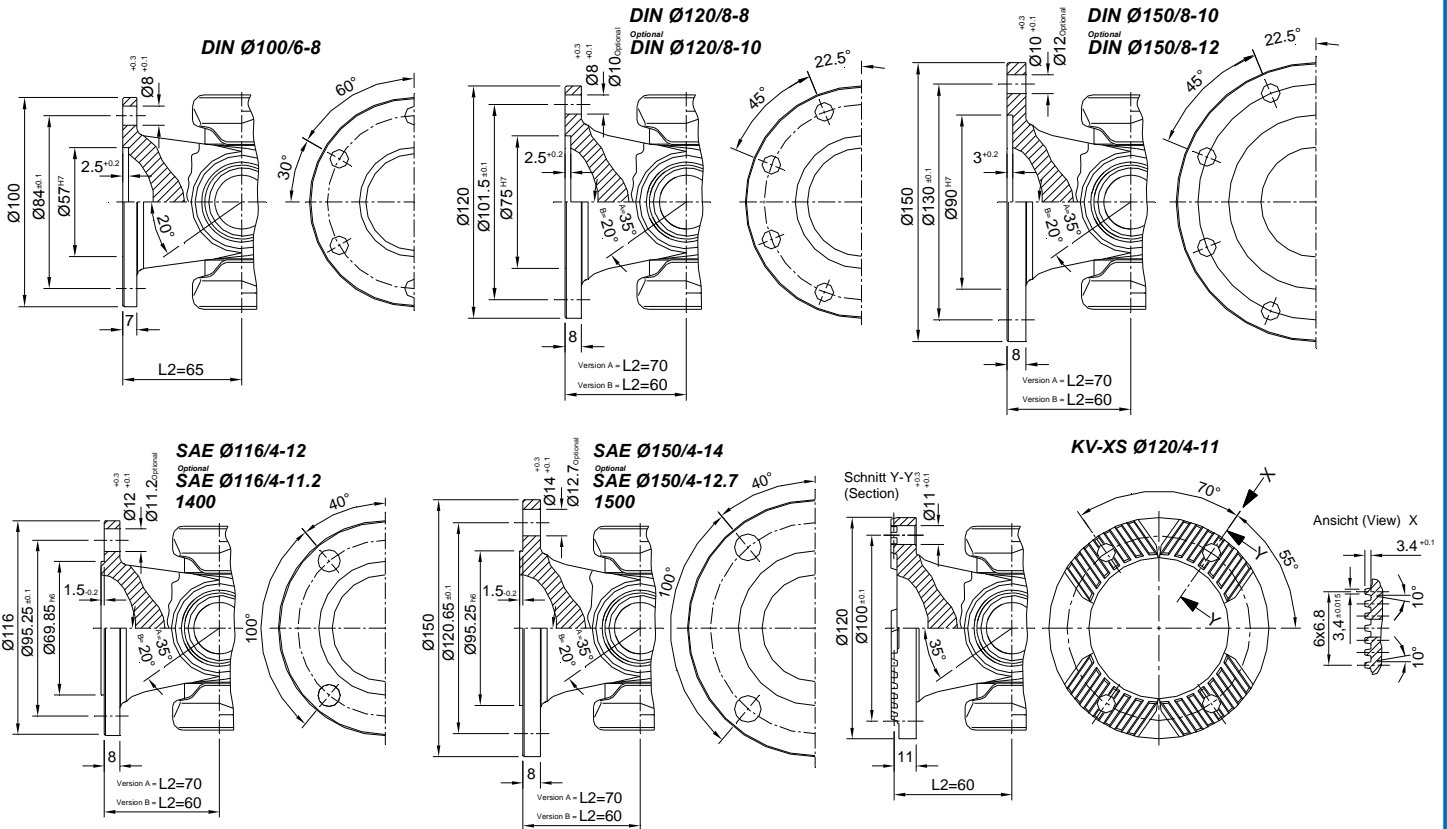


GW	507-105	506-105
L1 (Optional)	220 (200) mm*	140 (120) mm*
Gewicht Weight	m _b 8.5 kg	5.1 kg
Massenträgheit Inertia moment	J _b 0.0142 kgm ²	0.00528 kgm ²
Verdrehsteifigkeit Torsional stiffness	C _b 83 kNm/rad	170 kNm/rad

*=andere Längen auf Anfrage *=other lengths on request



Flansche Flanges



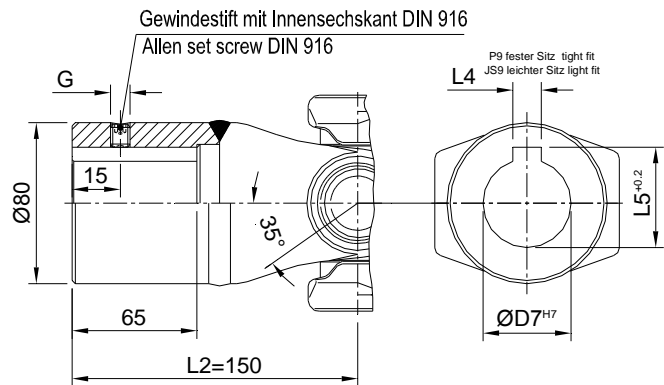
Extra Daten data	m_f (kg)	J_f (kgm ²)	C_f (kNm/rad)
DIN Ø100	-0.9	-0.0021	+4.5
DIN Ø120 + SAE Ø116	0	0	0
DIN Ø150 + SAE Ø150	+1.5	+0.0041	-6.1
KV-XS Ø120	+0.7	+0.0011	-3.8

m_f = Gewicht weight J_f = Massenträgheit inertia moment
 C_f = Verdrehsteifigkeit torsional stiffness

Naben Sleeves

Auf Wunsch jede andere Passung als H7 für D7.
 All other fits as H7 for D7 on request

Nabe mit Passfeder gemäß DIN 6885
 sleeve with key according DIN 6885



D7	L6	L5	G	D7	L6	L5	G	D7	L6	L5	G	D7	L6	L5	G
10	3	11,4	M3x3mm	20	6	22,8	M5x5mm	30	8	33,3	M6x6mm	40	12	43,3	M10x10mm
11	4	12,8	M3x3mm	21	6	23,8	M5x5mm	31	10	34,3	M8x8mm	41	12	44,3	M10x10mm
12	4	13,8	M3x3mm	22	6	24,8	M5x5mm	32	10	35,3	M8x8mm	42	12	45,3	M10x10mm
13	5	15,3	M4x4mm	23	8	26,3	M6x6mm	33	10	36,3	M8x8mm	43	12	46,3	M10x10mm
14	5	16,3	M4x4mm	24	8	27,3	M6x6mm	34	10	37,3	M8x8mm	44	12	47,3	M10x10mm
15	5	17,3	M4x4mm	25	8	28,3	M6x6mm	35	10	38,3	M8x8mm	45	14	48,8	M8x8mm
16	5	18,3	M4x4mm	26	8	29,3	M6x6mm	36	10	39,3	M8x8mm	46	14	49,8	M8x8mm
17	5	19,3	M4x4mm	27	8	30,3	M6x6mm	37	10	40,3	M8x8mm	47	14	50,8	M8x8mm
18	6	20,8	M5x5mm	28	8	31,3	M6x6mm	38	10	41,3	M8x8mm	48	14	51,8	M6x6mm
19	6	21,8	M5x5mm	29	8	32,3	M6x6mm	39	12	42,3	M10x10mm	50	14	53,8	M6x6mm