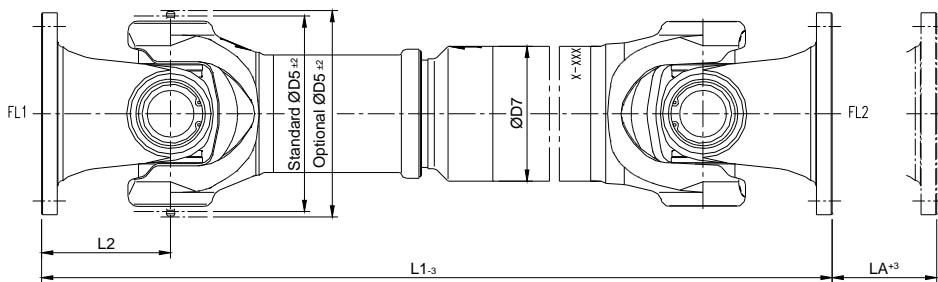


## Eckdaten basic data

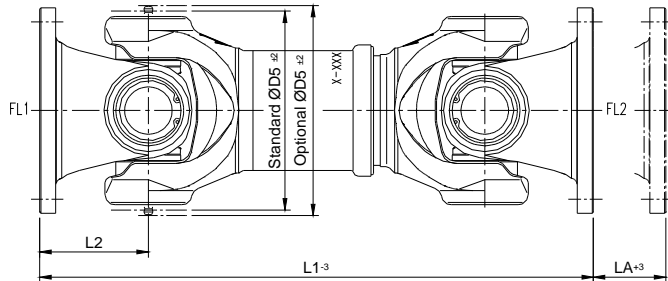
Maximaldrehmoment Maximum torque (M <sub>dmax</sub> ) (M <sub>tmax</sub> )	<b>6000 Nm</b>	Dauerwechsel Drehmoment Alternating torque	<b>2900 Nm</b>
Grenzdrehmoment Limit torque	<b>10000 Nm</b>	Drehzahl Revolution	<b>1 – 5000 U/min (rpm)</b>
Betriebstemperatur Operational temperature	Standard: <b>-30°C - +120°C</b> Optional: auf Anfrage	Rohr Verdrehsteifigkeit Tube torsional stiffness C <sub>t</sub> C <sub>t</sub>	Standard: <b>1.72 kNm/rad per m</b>
Rotationsdurchmesser Diameter of rotation	Standard: <b>Ø 144 mm (D5)</b> Optional: <b>Ø 149 mm (D5)</b>	Rohr Massenträgheit Tube inertia moment J <sub>t</sub> J <sub>t</sub>	Standard: <b>0.0169 kgm<sup>2</sup> per m</b>
Rohrdurchmesser Tube diameter	Standard: <b>Ø 100x3 mm (D7)</b> Optional: <b>Ø 85x5 mm (D7)</b>	Rohrgewicht Tube weight m <sub>t</sub> m <sub>t</sub>	Standard: <b>7,18 kg per m</b>

\*=Alle anderen Rohrdurchmesser auf Anfrage      \*=all other tube diameter on request

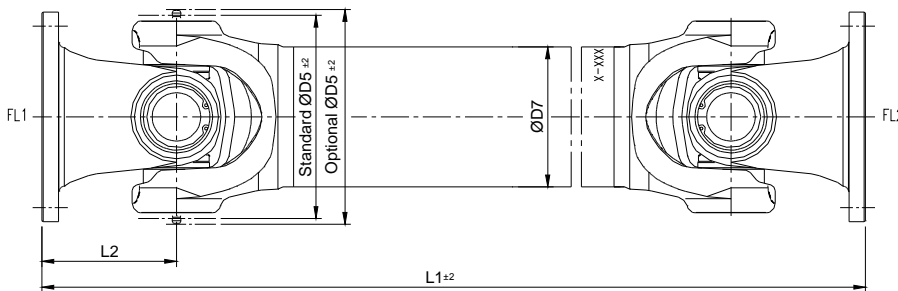


<b>GW</b>	<b>500-122</b>
L1	541–6300 mm
LA	110 mm *
Gewicht Weight	m <sub>b</sub> 24,0 kg

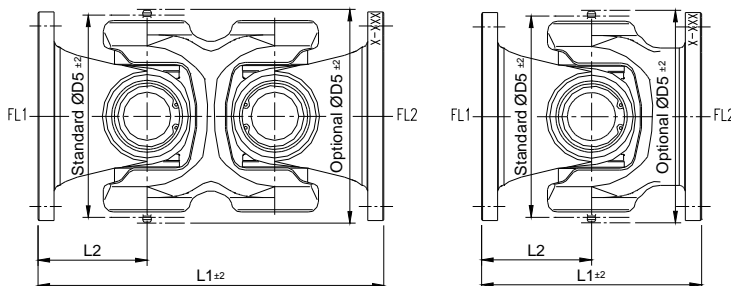
\*=längeren LA auf Anfrage  
\*=longer LA on request



<b>GW</b>	<b>513-122</b>
L1	385–540 mm
LA	30-110 mm



<b>GW</b>	<b>505-122</b>
L1	290–6200 mm
Gewicht Weight	m <sub>b</sub> 18.0 kg



<b>GW</b>	<b>507-122</b>	<b>506-122</b>
L1 (Optional)	235 mm*	144 mm*

\*=andere Längen auf Anfrage      \*=other lengths on request



## Flansche *Flanges*

